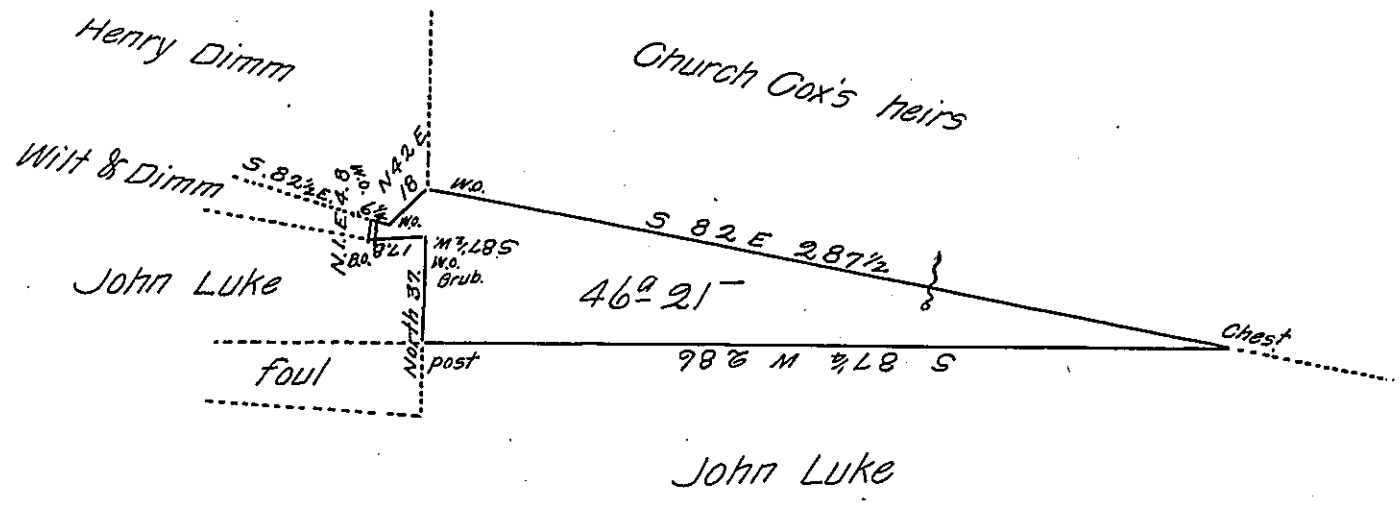


Courses & Distances
 from W.O. grub.
 S. 87½ W 17.8 Bd.
 N. 1 E. 4.8 Wd.
 S. 82½ E. 6¼ Wd.
 N 42 E. 18. Wd.



Draught of land situate in Greenwood Township Mifflin County Containing Forty six acres & twenty one perches & allowance of 6 P.C. Surveyed in part 5th July 1816 & finished 16th August 1821 in pursuance of a Warrant to And^w Stroup dated the 4th Sept^r 1815.

Wm McAlister D.S.

To Samuel Cochran Esq^r
Surveyor General of Pennsylvania

IN TESTIMONY that the above is a copy of the original remaining on file in the Department of Internal Affairs of Pennsylvania, made conformably to an Act of Assembly approved the 16th day of February 1833, I have hereunto set my hand and caused the Seal of said Department to be affixed at Harrisburg, this *fourth* day of *March* 1907.

Geo A B Brown
 Secretary of Internal Affairs.